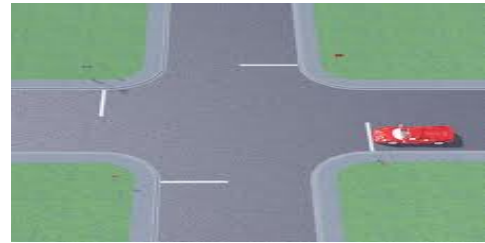




SEAT BELT



INTERSECTION



ROUNDABOUT



BROKEN LINES



SINGLE CONTINUOUS LINE



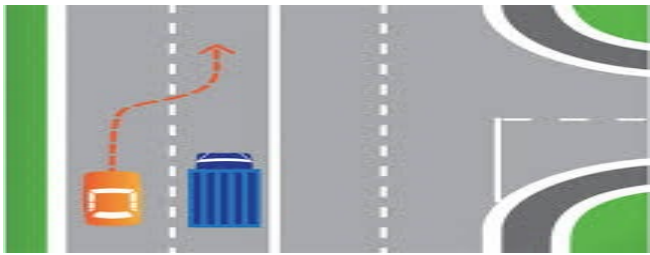
DOUBLE CONTINUOUS LINE



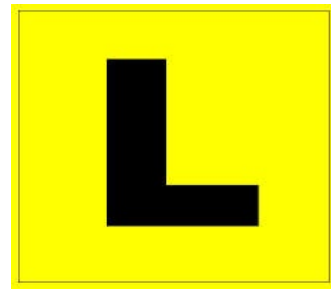
ARROW



PEDESTRIAN CROSSING



OVERTAKING



"L" PLATE



HEADLIGHTS



TYRE



STEERING WHEEL



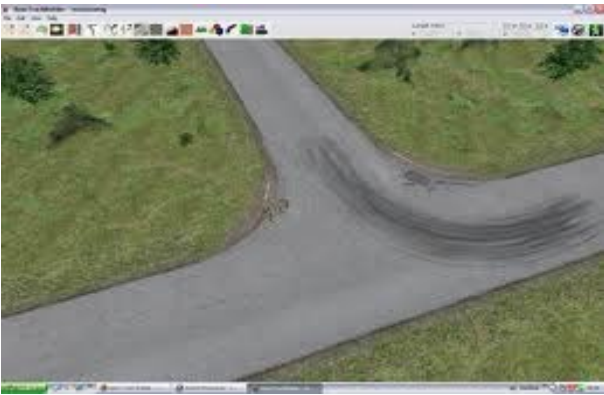
WINDSCREEN WIPER



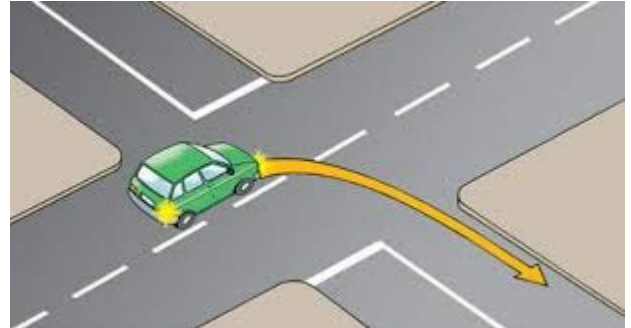
MIRRORS



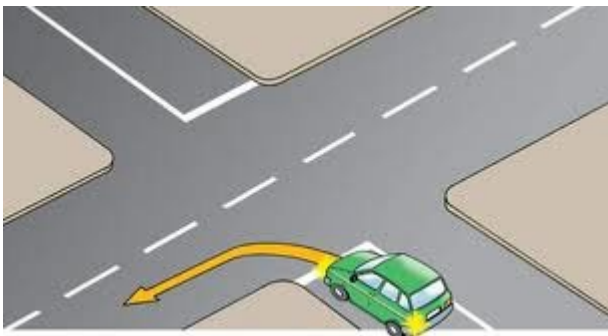
INDICATOR LIGHT



T-JUNCTION



TURNING RIGHT



TURNING LEFT



MERGING LANES

LEFT LANE



Figure 3-17. SIGNAL AHEAD Sign (W3-5).

TRAFFIC CONTROL SIGNALS