

# Getting around

Tutor Resources for the AMEP

Transport

Post-beginner

## **Tutor Resources for the AMEP**

### **© Commonwealth of Australia 2011**

This work is copyright. You may download, display, print and reproduce this material in unaltered form only (retaining this notice) for your personal, non-commercial use or use within your organisation. Apart from any use as permitted under the Copyright Act 1968, all other rights are reserved.

Requests for further authorisation should be directed to the:

Commonwealth Copyright Administration

Copyright Law Branch

Attorney-General's Department

Robert Garran Offices

National Circuit

Barton ACT 2600

Fax: 02 6250 5989

Email: [commonwealth.copyright@ag.gov.au](mailto:commonwealth.copyright@ag.gov.au)

### **Disclaimer**

While the Department of Education and Training and its contributors have attempted to ensure the material in this booklet is accurate at the time of release, the booklet contains material on a range of matters that are subject to regular change. No liability for negligence or otherwise is assumed by the department or its contributors should anyone suffer a loss or damage as a result of relying on the information provided in this booklet.

References to external websites are provided for the reader's convenience and do not constitute endorsement of the information at those sites or any associated organisation, product or service. The Department of Education and Training accepts no responsibility for the accuracy, completeness or currency of material contained on any external website that is referred to in this booklet.

### **Acknowledgements**

The Adult Migrant English Program (AMEP) is funded by the Australian Government Department of Education and Training. Nationally, AMEP Distance/e-learning is delivered through the AMEP FLN Consortium.

### **Images**

Images from *Australian Citizenship Our Common Bond*, *Our Common Bond A Course in Australian Citizenship* and *Its Over to You* reproduced with permission from the Department of Immigration and Citizenship.

Images reproduced with permission from AMES.

©2011 Photos.com, a division of Getty Images. All rights reserved.

Theme: **Transport**

Topic: **Getting around**

Task	Language focus	Learning activities	Resources
<p>1. Can understand directions</p> <p>Can interpret simple maps</p>	<p><b>Vocabulary</b> directions, symbols, roundabout, traffic lights, compass, north, south, east, west</p> <p><b>Structure</b> straight ahead, go past, T-intersection, turn left/right, take the first street on the left/right, cross over the bridge</p>	<p>Match words to pictures</p> <p>Follow directions to find the destination</p> <p>Find meanings of words</p> <p>Interpret symbols on a map</p> <p>Re-order directions</p> <p>Give directions</p> <p>Answer questions about a map</p> <p><b>Extension</b> Role play asking for directions</p>	<p>Worksheet 1: Directions</p> <p>Worksheet 2: Map reading 1 directions</p> <p>Dictionary</p> <p>Worksheet 3: Giving instructions</p> <p>Worksheet 4: Map reading 2</p> <p>Authentic map of learner’s local area</p>

Theme: **Transport**Topic: **Getting around**

## Directions

<b>Task 1:</b>	Can understand directions Can interpret simple maps
<b>Vocabulary:</b>	directions, symbols, roundabout, traffic lights, compass, north, south, east, west
<b>Language structure:</b>	straight ahead, go past, T-intersection, turn left/right, take the first street on the left/right, cross over the bridge

### Preparation

Bring a map of the learner's local area to the session.

### Activity instructions

#### *Match words to pictures*

📄 Worksheet 1: Directions

Ask: Have you ever asked someone for directions? Discuss.

Learner reads aloud the directions in the box.

Learner writes the directions below the corresponding pictures.

#### **Answers**

- 1 – go straight ahead
- 2 – turn left, 3 – turn right
- 4 – take the first street on the left
- 5 – turn left at the roundabout
- 6 – go past the bank
- 7 – cross over the bridge
- 8 – go to the T-intersection

#### *Follow directions to find the destination*

📄 Worksheet 2: Map reading 1

A. Ask learner to look at the map while you read Samina's story.

Read the story again and learner draws the directions on the map to find the destination.

B. Learner reads aloud Samina's directions and corrects their work.

#### **Answer**

The station.

#### *Find meanings of words*

📄 Worksheet 2: Map reading 1

📄 Dictionary

C. Learner looks up the meanings of the prepositions of place in their dictionary.

Encourage learner to write down any other prepositions of place they might know (e.g. beside, across from, under, in, above, below, on top of).

Discuss the place of things in the room. Ask questions: Where is the \_\_\_\_ (television, lamp etc)?

Learner responds: *The television is on the table. The lamp is beside the sofa etc.*

*Interpret symbols on a map*

D. Worksheet 2: Map reading 1

Ask learner if they recognise any of the symbols. Discuss.

Learner writes the words from the box next to the corresponding symbols.

Look at the map in part B together and ask learner to locate the symbols.

E. Discuss the compass.

Learner reads the statements and answers 'true' or 'false'.

**Answers**

1 – True, 2 – False, 3 – False, 4 – False, 5 – True, 6 – True, 7 – True, 8 – False

Ask learner to correct the false statements and make them true.

*Re-order directions*

Worksheet 3: Giving directions

A. Explain to learner where they are on the map and where they need to get to: restaurant in Main Road – bus stop in Railway Parade.

Instruct learner to draw their path on the map from the restaurant to the bus stop.

Learner reads the directions and numbers them in the correct order.

**Answer**

1 – Turn left into Station Street.

2 – Walk past the toilets and cross Station Street.

3 – Cross the train line.

4 – Turn right at the corner.

5 – Walk straight ahead to the bus stop.

*Give directions*

Worksheet 3: Giving directions

B. Learner reads where Samina wants to go.

Learner looks at the map in part A and completes the directions.

**Answers**

1 – I go out of my house and turn left into Hazel Street. Then I turn right into Railway Parade and right into McCrae Road. The public phone box is in McCrae Road, opposite the school.

2 – Cross Railway Parade. Walk along McCrae Road. Walk past the church. The school is on the left.

3 – Turn left into Hazel Street. Walk straight ahead. Turn right into Railway Parade. Walk straight ahead. Turn left into Station Street. Cross the train line. The café is on the left. (There may be other acceptable variations of these directions.)

*Answer questions about a map*

Worksheet 4: Map reading 2

A. Look at the map together.

Learner locates the symbols on the map. Discuss.

B. Learner reads and answers the questions about the map in part A.

**Answers**

1 – 11, 2 – Flagstaff Station, 3 – 216, 219, 232, 4 – 30, 34, City Circle

C. Learner reads Kwan's directions and draws his path from the car park to AMES on the map in part A.

Learner writes the directions and reads aloud.

### Extension activity

#### *Role play asking for directions*

- ☞ Authentic map of learner's local area

Using a map of the learner's local area, locate various places such as the library, supermarket, school etc.

Role play asking and giving directions to local places. Reverse roles.

For example: Excuse me, can you please tell me how to get to the library?

*Yes, walk straight ahead, turn left into Smith Street, turn right into Wills Street and the library is on your left.*

### Acknowledgement of image source

©2011 Photos.com, a division of Getty Images. All rights reserved.

## Worksheet 1: Directions

Write the directions from the box below the correct pictures.

go straight ahead

turn right

turn left at the roundabout

go past the bank

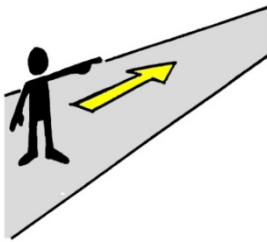
turn left

take the first street on the left

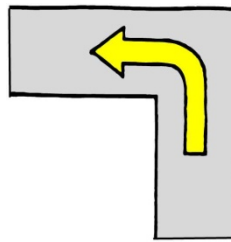
go to the T-intersection

cross over the bridge

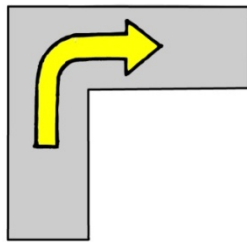
1.



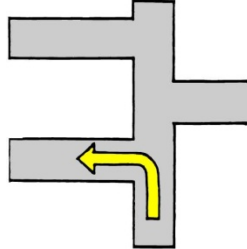
2.



3.



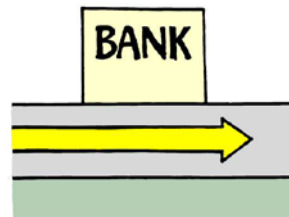
4.



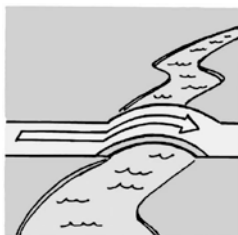
5.



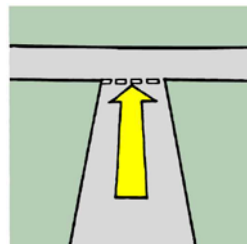
6.



7.

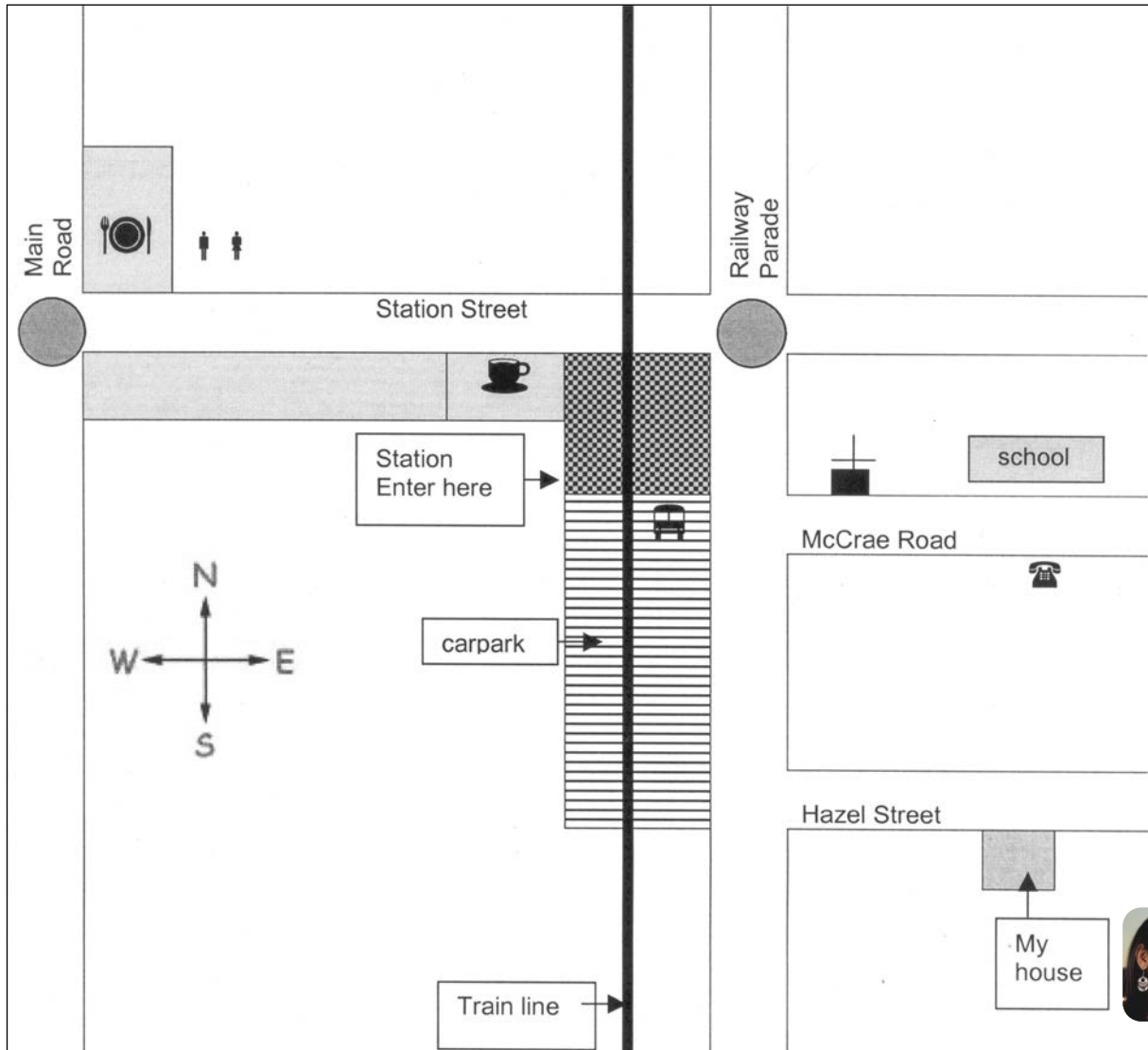


8.



## Worksheet 2: Map reading 1

A. Where does Samina go every morning?  
Listen to the story and draw her path on the map.





**B. Read Samina's story and check your answer.**

Hi, my name's Samina. I am an evening student. I work during the day. I catch public transport to work everyday.

I live in Hazel Street. In the morning I come out of my house... I walk along Hazel Street to Railway Parade. Then I turn right and walk past McCrae Road to Station Street. I turn left and cross the train line. Then I turn left again at the café. I walk through the café, then turn left again.



Where am I? \_\_\_\_\_

**C. Use your dictionary to find the meaning of these words. They are called *preposition of place*.**

next to \_\_\_\_\_

opposite \_\_\_\_\_

near \_\_\_\_\_

on the corner of \_\_\_\_\_

behind \_\_\_\_\_

in front of \_\_\_\_\_

between \_\_\_\_\_

Do you know any other prepositions of place?

\_\_\_\_\_








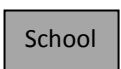
\_\_\_\_\_

\_\_\_\_\_

\_\_\_\_\_

D. Here are some symbols that we see on maps.  
Write the words from the box next to their symbols.

traffic lights	toilets	public telephone	bus stop
church	restaurant	cafe	school

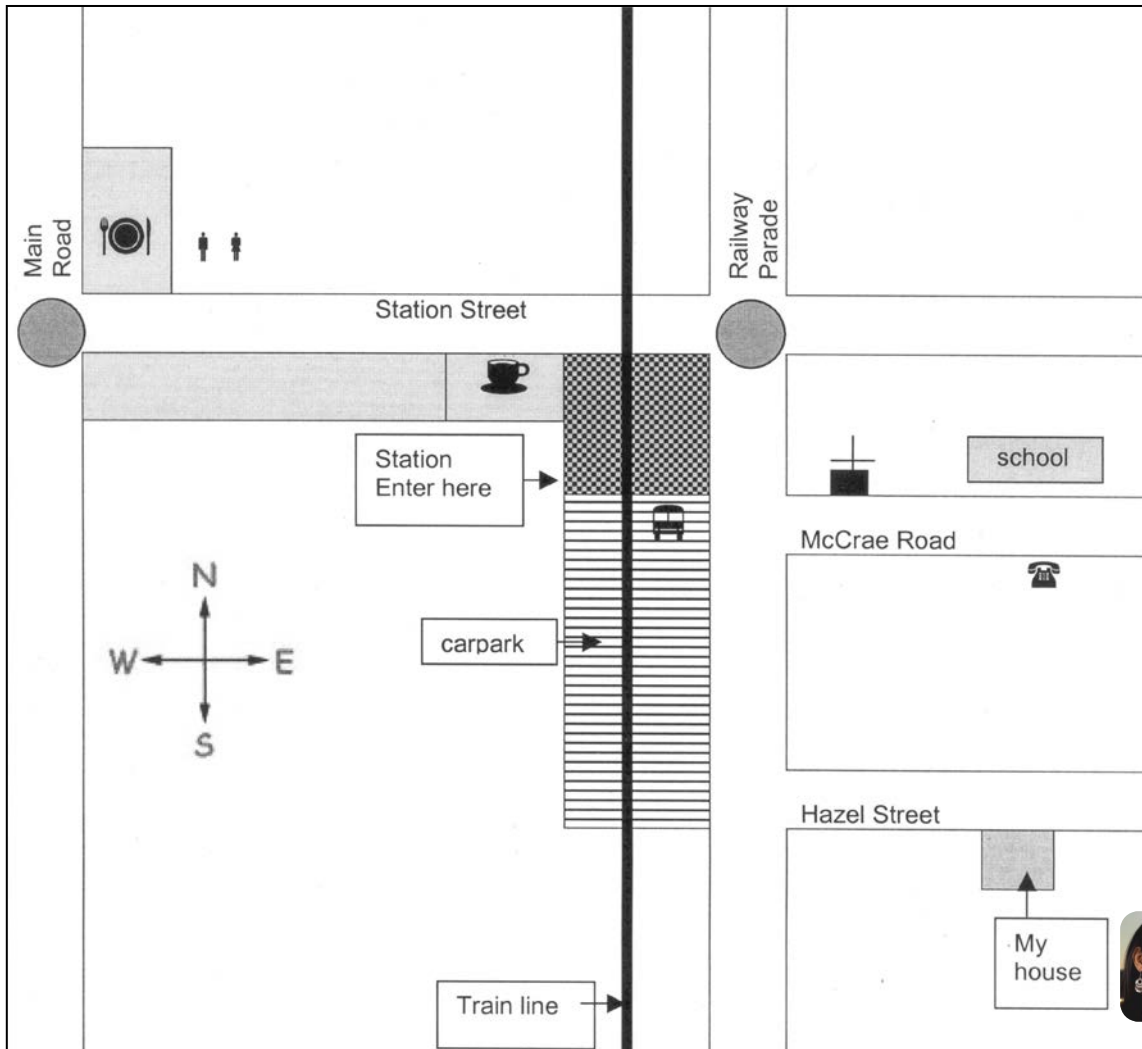
- |    |   |       |    |   |       |
|----|---|-------|----|---|-------|
| 1. |  | _____ | 2. |  | _____ |
| 3. |  | _____ | 4. |  | _____ |
| 5. |  | _____ | 6. |  | _____ |
| 7. |  | _____ | 8. |  | _____ |

E. Look at the map in part B and answer **True** or **False** to the statements.

- |   | True/False |
|---|------------|
| 1. There is a church next to the school in McCrae Road.                       | _____      |
| 2. There is a restaurant on the south corner of Main Road and Station Street. | _____      |
| 3. There are toilets opposite the restaurant in Station Street.               | _____      |
| 4. There is a public telephone opposite the school in Hazel Street.           | _____      |
| 5. There is a café next to the station in Station Street.                     | _____      |
| 6. There are traffic lights on the corner of Main Road and Station Street.    | _____      |
| 7. There is a bus stop in Railway Parade, opposite McCrae Road.               | _____      |
| 8. There are traffic lights on the corner of Railway Parade and McCrae Road.  | _____      |

## Worksheet 3: Giving directions

A. Which way to the bus stop?  
Number the directions in the correct order.



You are at the restaurant on the corner of Main Road and Station Street. You want to catch the bus in Railway Parade. You come out of the restaurant in Main Road.

- Walk straight ahead to the bus stop.
- Walk past the toilets and cross Station Street.
- Turn right at the corner.
- Turn left into Station Street.
- Cross the train line.

**B. Read where Samina wants to go.**  
*Look at the map in part A and complete the directions.*

1. **I am at home. I need to make a telephone call. My telephone is not working and I don't have a mobile phone.**

I go out of my house and turn left into \_\_\_\_\_.

Then I turn right into \_\_\_\_\_ and right into \_\_\_\_\_.

The public phone box is in \_\_\_\_\_, opposite the \_\_\_\_\_.

2. **I am at the bus stop. I want to pick up my son from school.**

Cross \_\_\_\_\_.

Walk along \_\_\_\_\_.

Walk past \_\_\_\_\_.

The school is on \_\_\_\_\_.

3. **I'm at my house. I want to meet my friend at the café.**

*Use words from the box.*

turn right	walk straight ahead	cross	turn left
------------	---------------------	-------	-----------

---

---

---

---

---

---



---

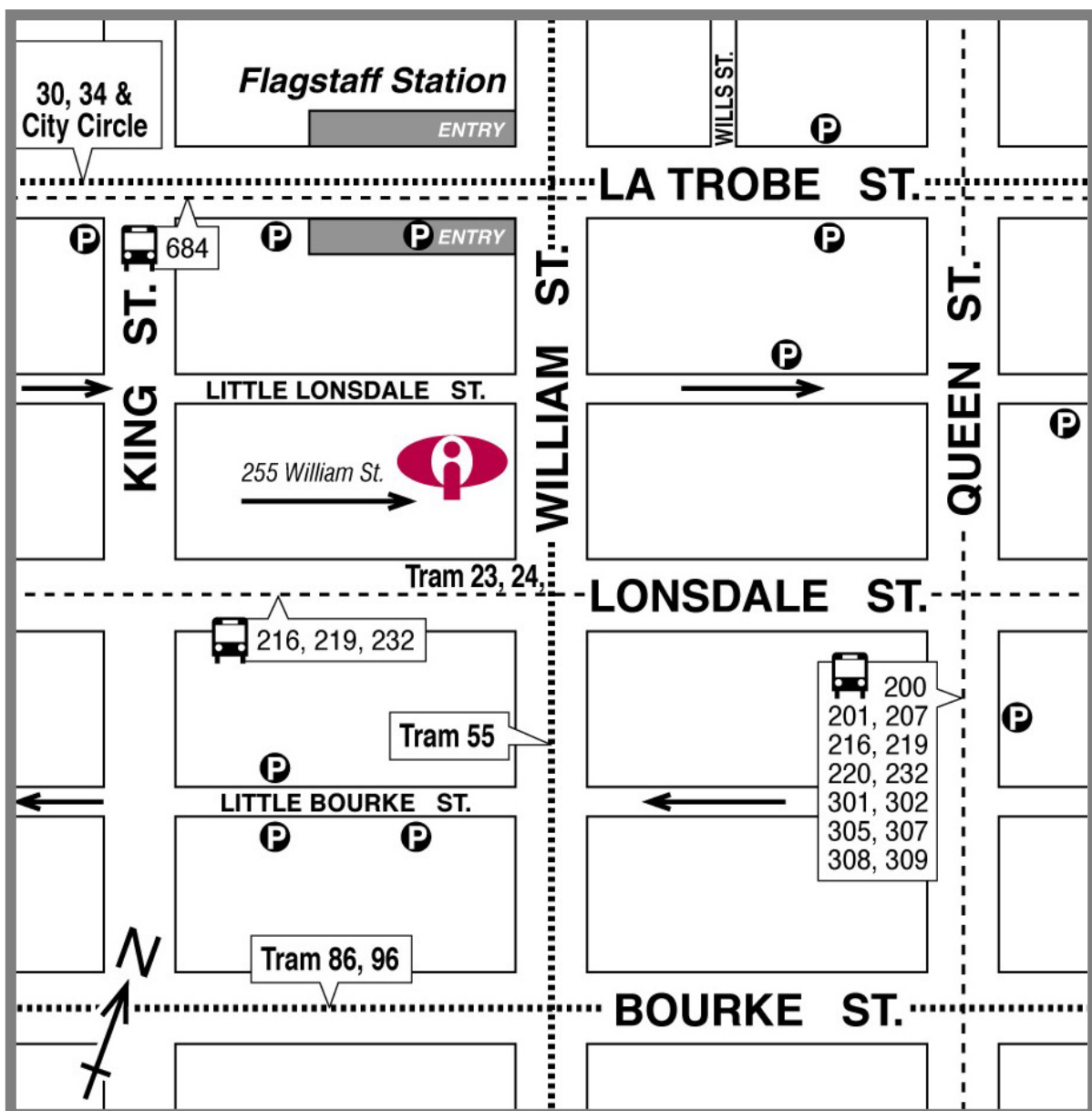
---

*The café is on the left.*

## Worksheet 4: Map reading 2

A. Find the symbols on the map.

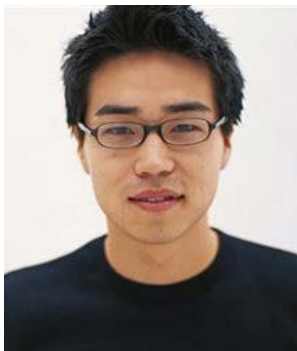
.....	tram line	- - - - -	bus route
<b>P</b>	car park		AMES Education centre
	bus	<b>ENTRY</b>	station



**B. Look at the map in part A and answer the questions.**

1. How many car parks are on the map? \_\_\_\_\_
2. What is the name of the station? \_\_\_\_\_
3. All buses have numbers. Which buses go along Lonsdale St? \_\_\_\_\_
4. All trams have numbers. Which trams go along La Trobe St? \_\_\_\_\_
5. Do you catch a bus or tram?  
What number? \_\_\_\_\_

**C. Read about how Kwan gets to AMES.  
On the map in part A, draw Kwan's path from the car park to AMES.  
Write directions for Kwan's path to AMES.**



This is Kwan. He is looking for a job. He goes to AMES in the city to get help. He drives to the city and parks his car in the car park in La Trobe Street. The car park is between William Street and Queen Street on the north side. He walks from the car park to AMES.

---

---

---

---

---

---

---

---

---

---